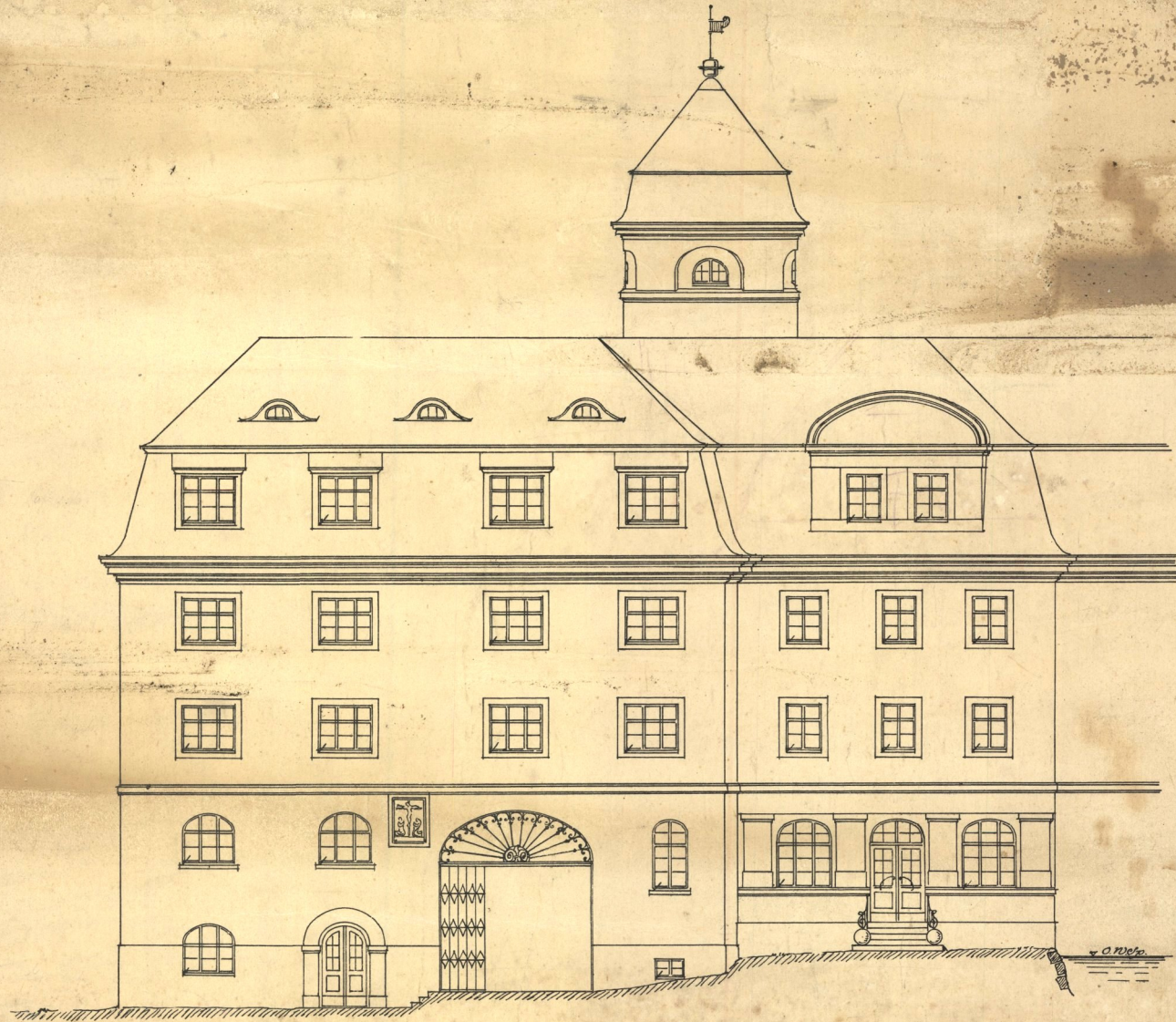
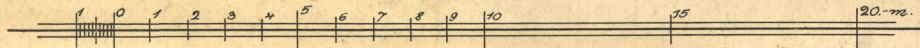


Schmollwitzer -  
Mühle.



*S. Eras.*  
*Arch.*

*N<sup>o</sup>. 1:100.*

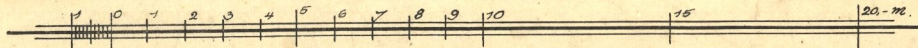


*Schmelzitzer -  
Mühle*



*St. Erat  
Arch.*

*St. 1:100.*

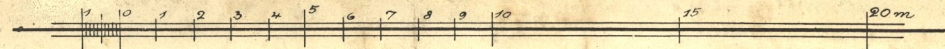


*Schmellwitzer  
Mühle.*

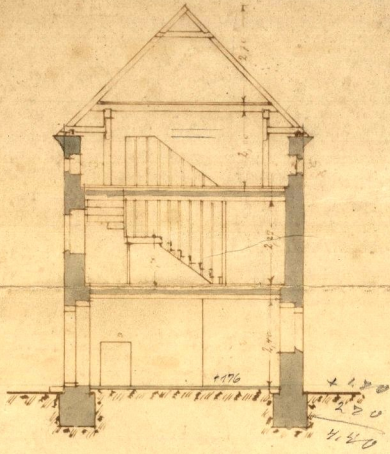


*D. Eras  
Arch.*

*1/16 1:100.*



Querschnitt



Zeichnung

zum Seitenbau der Hofjste

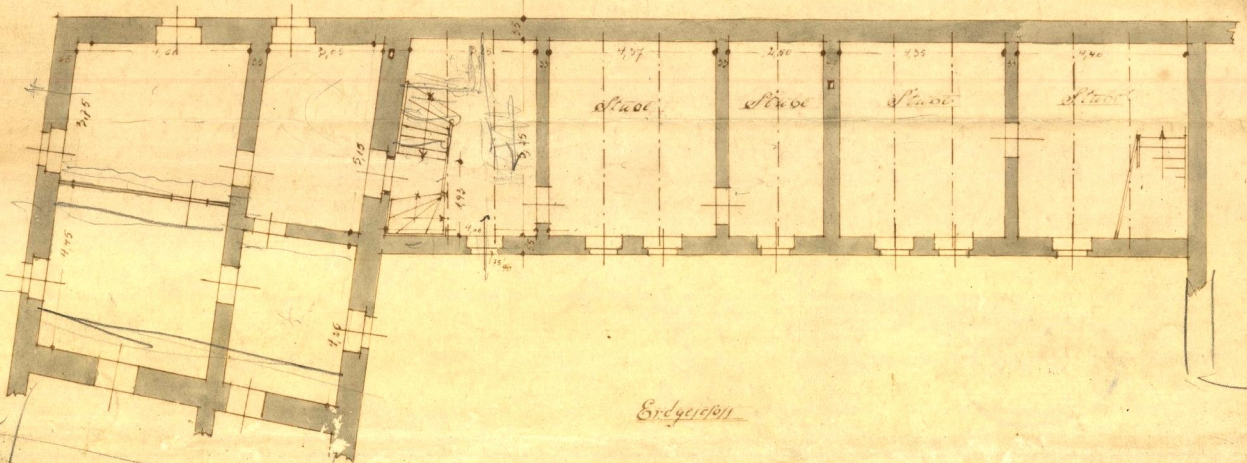
in Schmiedewitz

Dr. Spwadnitz

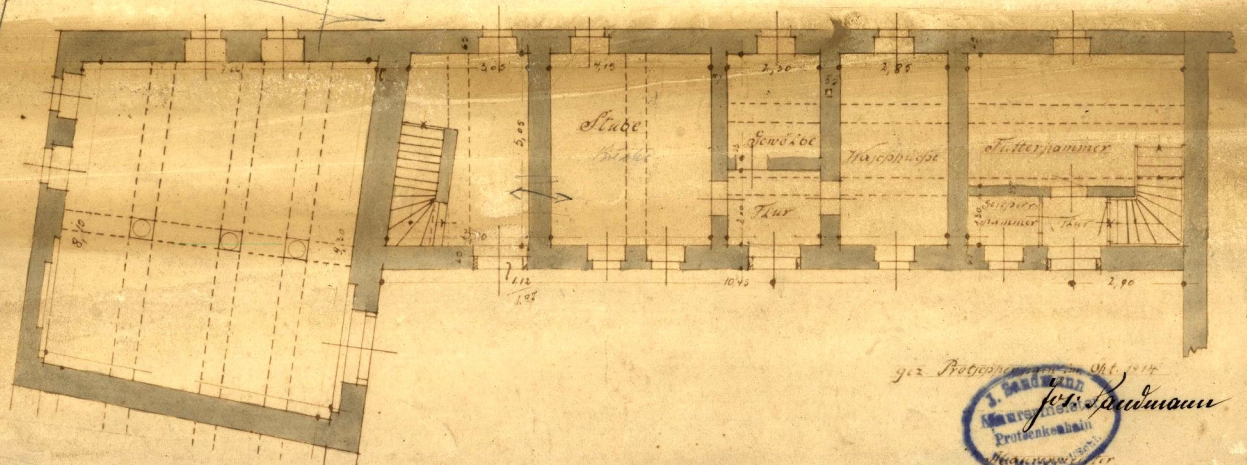
Abb. T. 100



Obergeschoss



Erdgeschoss



gez. Protopopow Okt. 1877  
 J. Sandmann  
 Architekt  
 Prof. Senckenberg  
 Frankfurt a. M.